



**Hewlett Packard
Enterprise**

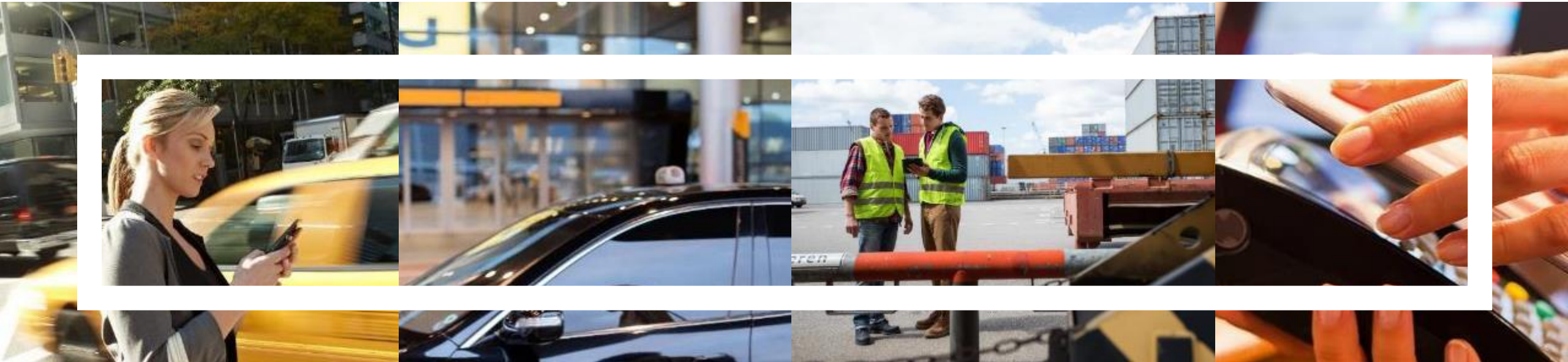
Use Case from Tomorrow

When AI helps Smart Cities become smarter

Oleksandr Kulakovskiy
Hybrid IT Solution Architect

29/01/2019

Prepare for the connected world where everything computes



Technology will be embedded everywhere

Everyone and everything will be connected

Everything will be understood

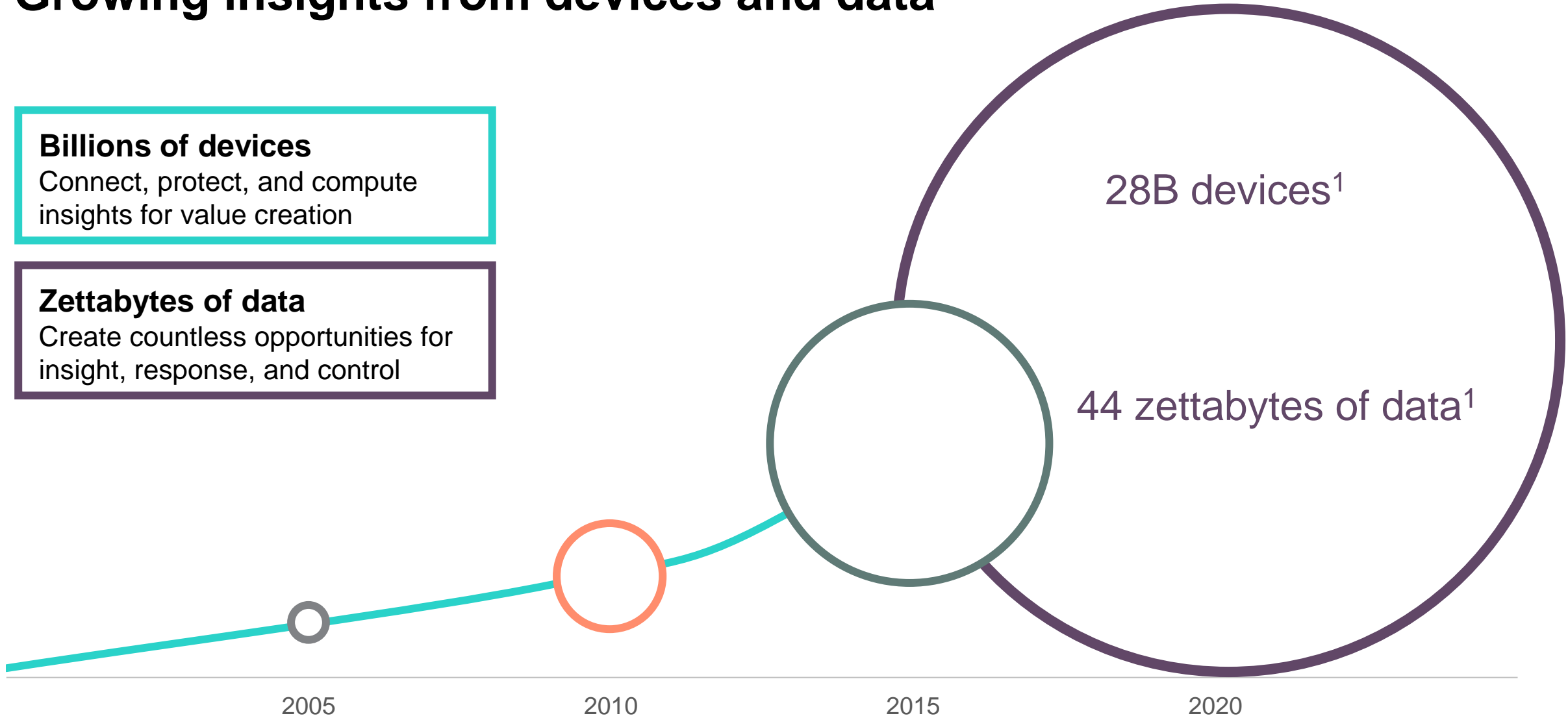
Growing insights from devices and data

Billions of devices

Connect, protect, and compute insights for value creation

Zettabytes of data

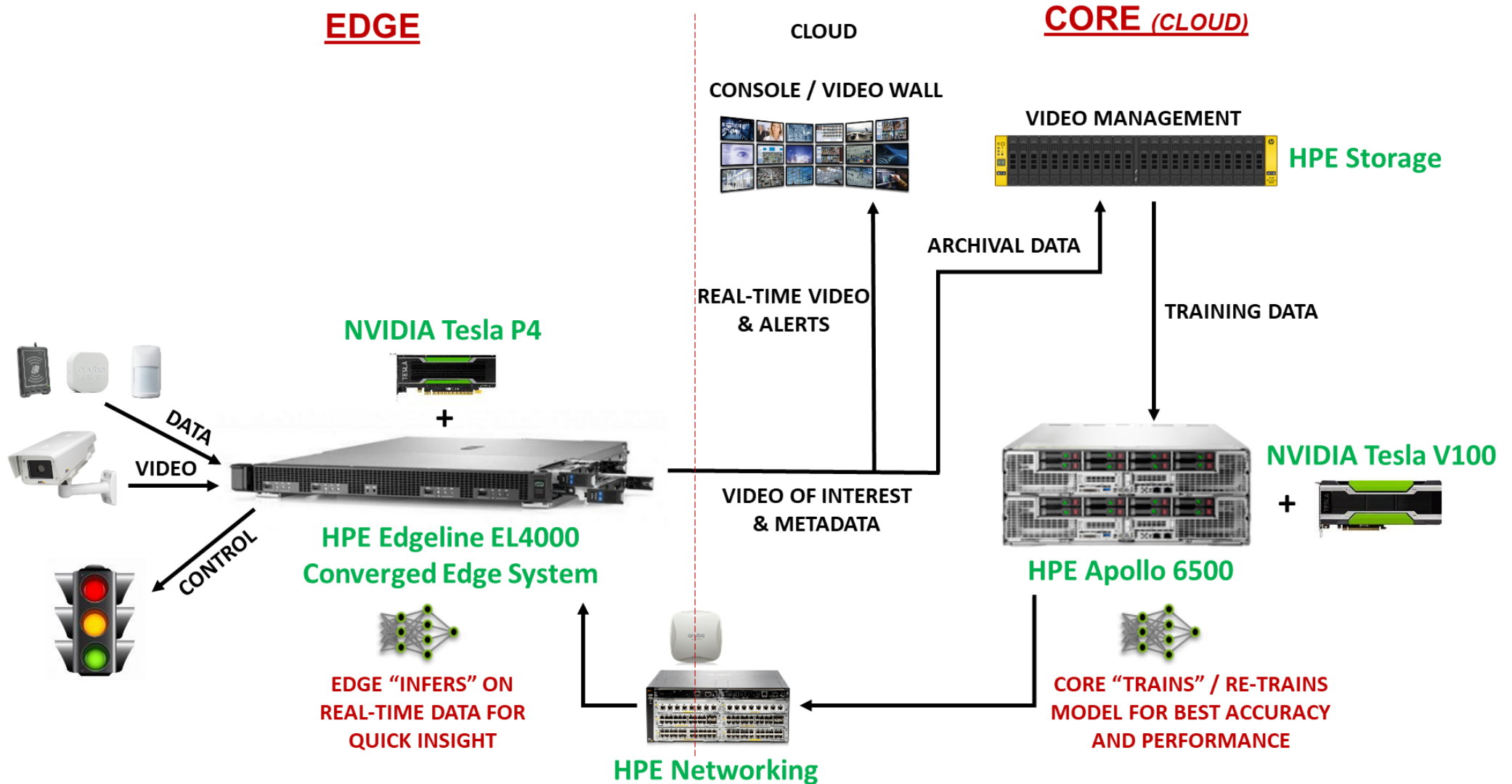
Create countless opportunities for insight, response, and control





Video Surveillance V2

HPE End-2-End Architecture



Case Study #1 – Sudden Faint



Initial:

Camera caught sudden change of Citizen position

Using zoom Platform analyzes moves (or its absence)

AI infers that Ambulance required



Step #1:

AI analyzes traffic situation, ambulance location

Incident created for most optimal Ambulance route

Traffic Management System supports Ambulance during all route



Step #2:

During First-Aid process medical sensors are connected to person

Doctor in charge of the case already receives real-time critical data about future Patient

Medical Card accessible as E-Card

Case Study #1 – Heart Attack

Treatment goes well and Patient goes for a walk on fresh air

Smart Bracelet measures all critical data, smart cardio sensor provides online data to Core Hospital System.

Portative sensor provides online data from Blood Analysis, Cardio sensor provides real-time Cardiogram

Based on all received data **AI predicts** Heart Attack.



Nurse received warning on mobile & pressed “Panic” button.

Doctor was near Patient exactly when it was required.



Case Study #1 – Outpatient Treatment

Patient was discharged from Hospital, but Doctor prescribed call twice a week.

For such calls Patient has **sensor kit**, which includes:

- Cardio sensor
- Pressure sensor
- Activity Bracelet
- Blood Analytics sensor



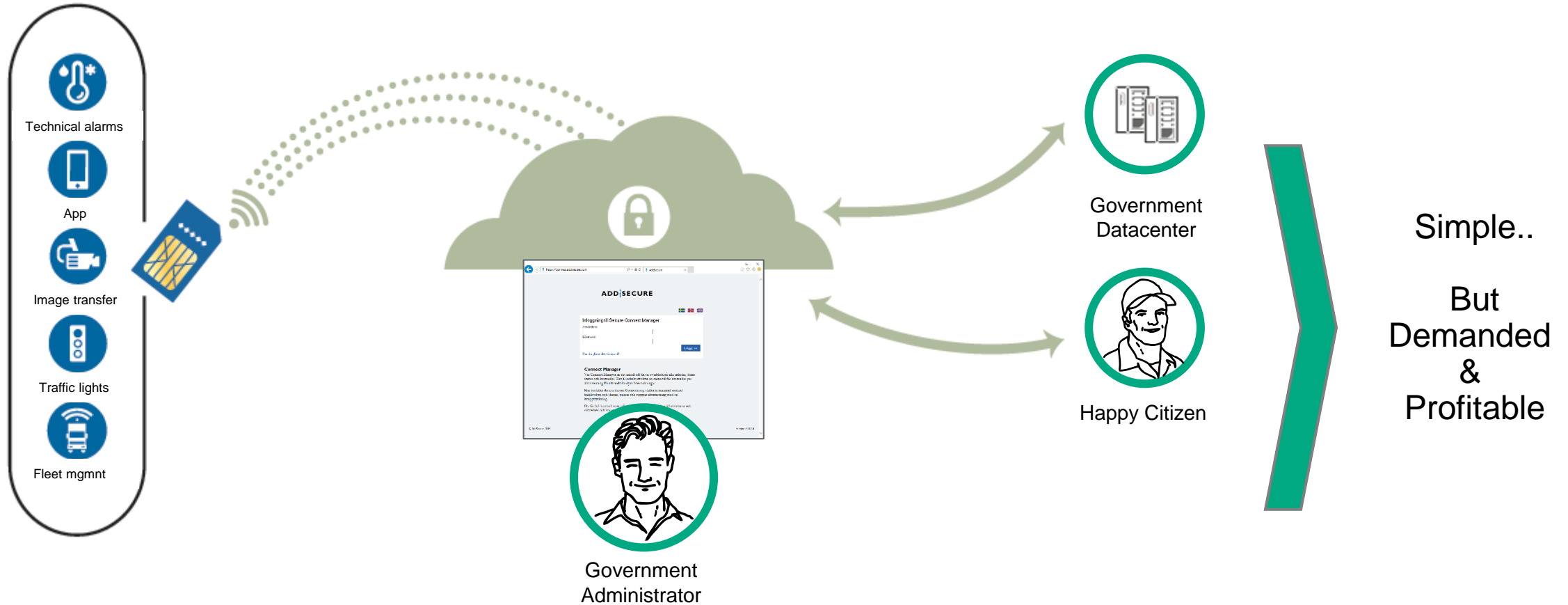
During the call Doctor receives **real-time data** about Patient status, trends, access to medical prescriptions management for Patient via secured access.

Pharmacies has read access to medical prescriptions via ID-Card.

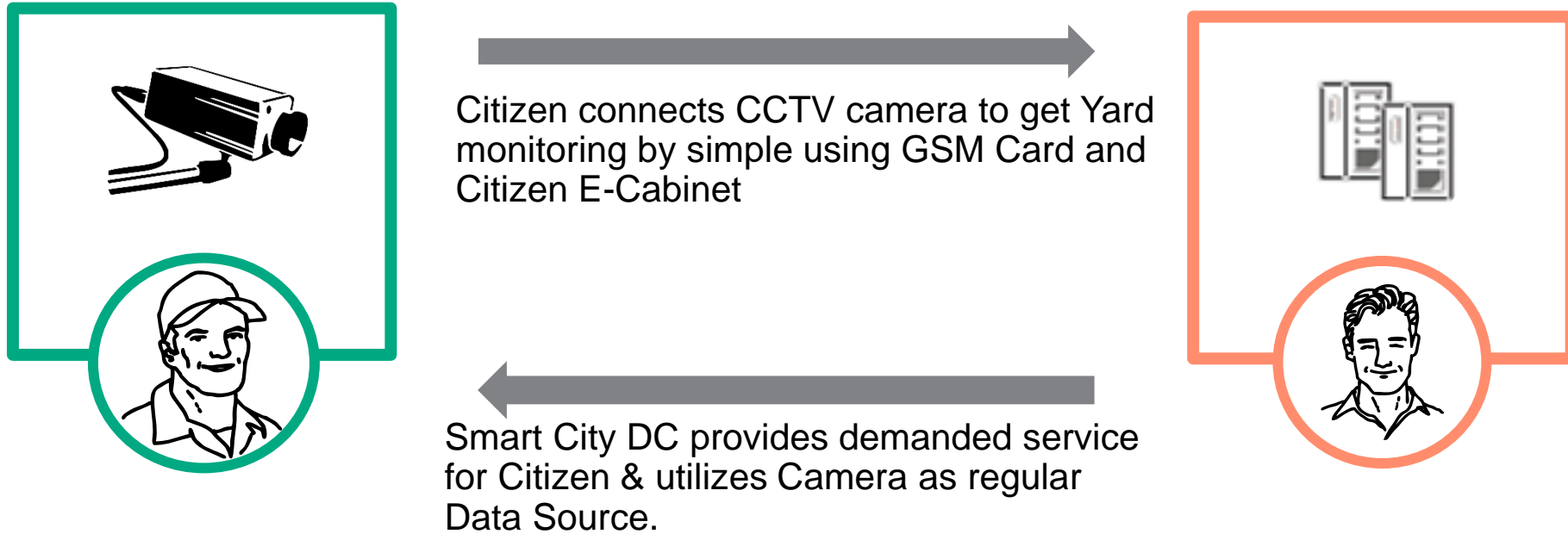
Patient's Family receives alarms in case of emergency



Case Study #2 – Just Connectivity



Case Study #2 – Connectivity as SaaS



Everyone is a **Winner!**

Case Study #3 – Disaster Protection

Citizen has a house near with Water. There is a risk of flood, especially during early Spring.

Intelligent Barriers operated by Smartphone:

- **Level Sensors** outside provides preventive Flood monitoring
- Fulfillment sensors automatically **enable pumps**
- AI “**knows**” when next barrier have to be **deployed**
- All process is now under control – lives are saved





Why HPE?

Elements of IoT

Expertise:



Services

Advise, transform, integrate, analytics, governance



Ecosystem

Open, extensive, partner-driven

Hybrid IT:



Hybrid Infrastructure

Distributed, deep; from edge to the cloud

Intelligent Edge:



IoT platforms

Enable and manage the IoT value chain



Connectivity

Ubiquitous, instant-on, multi-protocol



Edge Infrastructure

Streaming, event processing location- and context-aware

Security

Access control, user behavior, and device management

“Things” generate data and need control



HPE IoT solutions

Expertise:



Services

Advise, transform, integrate, analytics, governance

IoT workshop

As a service



Ecosystem

Open, extensive, partner-driven

Consulting

Service providers

Solution partners

Technology

Hybrid IT:



Hybrid Infrastructure

Distributed, deep; from edge to the cloud

Apollo

ProLiant

Hyper Converged

Aruba

3PAR, Nimble, StoreOnce, Scality

Intelligent Edge:



IoT platforms

Enable and manage the IoT value chain

Mobile-first connectivity, security, location

HPE Universal IoT Platform with NIP



Connectivity

Ubiquitous, instant-on, multi-protocol

Aruba BLE Beacons and Sensors

Aruba Wired and Wireless Networking

PXI Cartridges



Edge Infrastructure

Streaming, event processing location- and context-aware

Aruba Mobile First

Edgeline Converged Systems and Intelligent Gateways

Multi access edge computing

Security

Access control, user behavior, and device management

ClearPass

Niara

“Things” generate data and need control



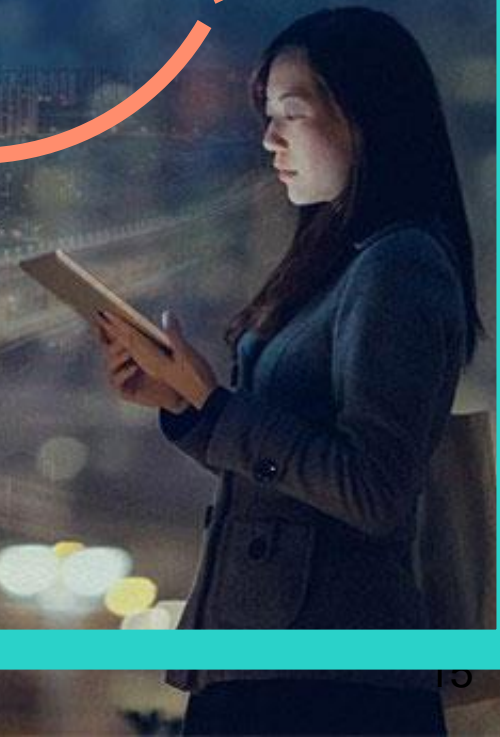


Hewlett Packard
Enterprise

We make
hybrid IT simple

← →
HPE is NOT about Product
HPE is about Solution

We power the
intelligent edge



Thank you



**Hewlett Packard
Enterprise**