

Smart Sustainable Cities in the 2030 Sustainable Development Agenda: the way forward based on cities' experience

Presentation at the Business for Smart Cities Expocongress
29-31 January 2019



*Gulnara Roll, Head
UNECE Housing and Land Management Unit*

Gulnara.Roll@un.org

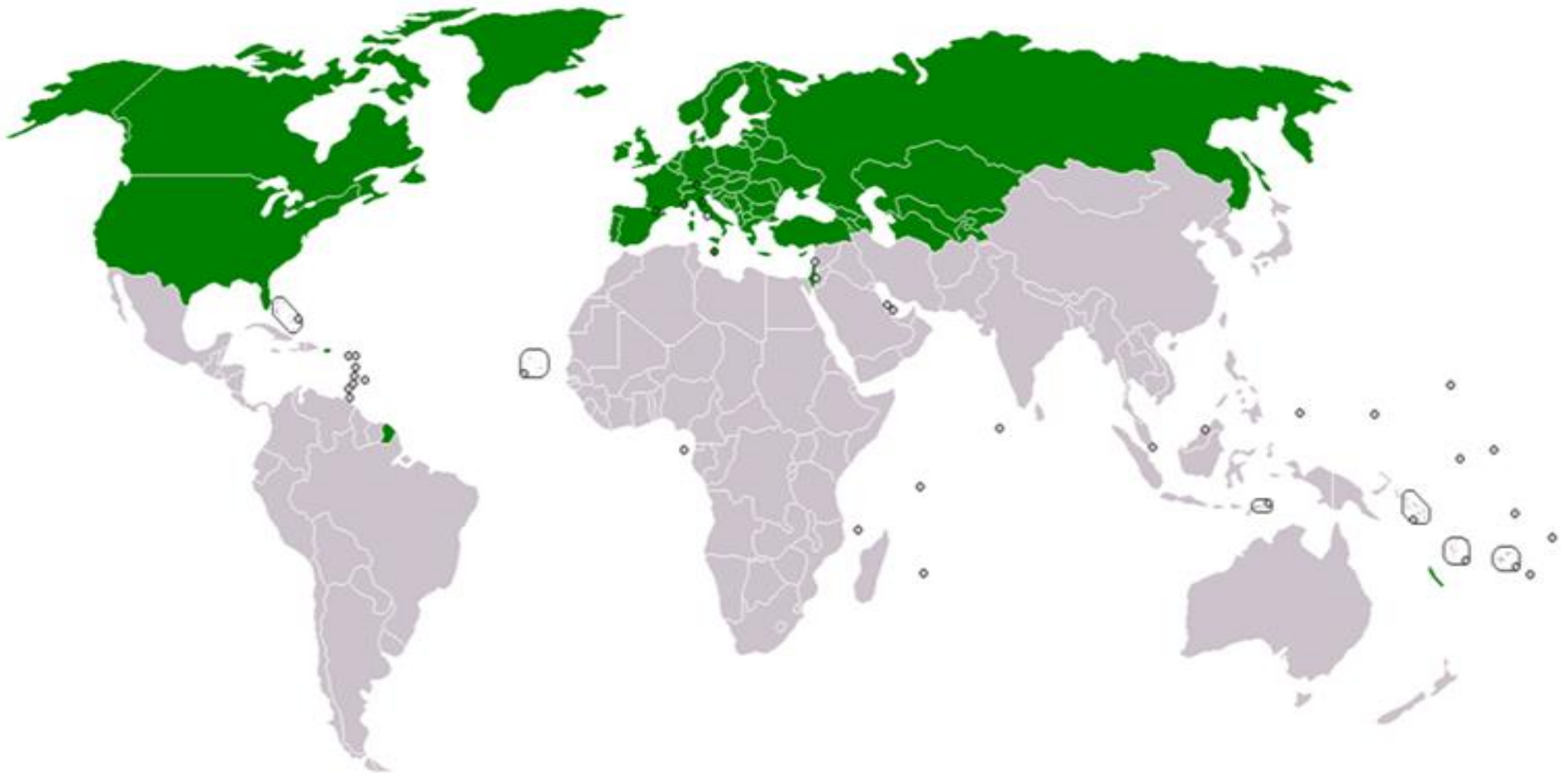




United Nations Economic Commission for Europe

56 member States in Europe, Central Asia and North America

An intergovernmental platform for policy dialogue and exchange of best practices



Role of the UN Regional Commissions to support the implementation of the 2030 agenda

- Integration of the 2030 Agenda for Sustainable Development into nationally owned sustainable development strategies
- Promoting policy coherence and coordination
- Enhancement of the data and statistical capacities of member States for the implementation of the 2030 Agenda for Sustainable Development

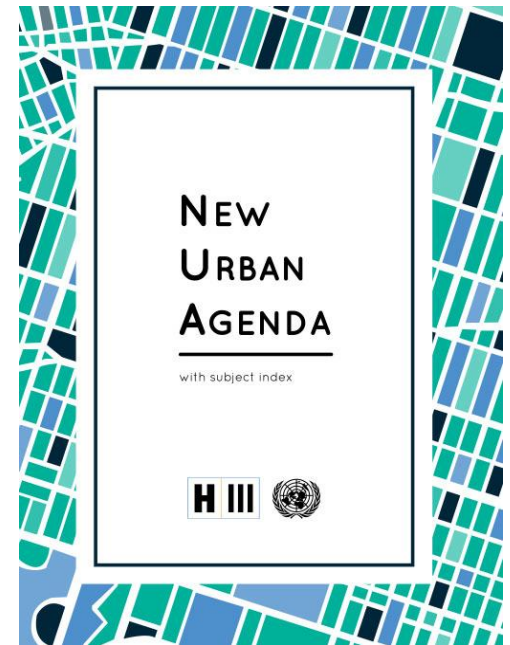


2030 AGENDA FOR SUSTAINABLE DEVELOPMENT



New Urban Agenda

- The New Urban Agenda –
- Cities
 - engines of prosperity
 - centres of cultural and social well-being
 - inclusive and resilient
 - respectful to environment
 - able to cope with climate change
 - providing affordable housing for all
 - achieving SDGs



Geneva UN Charter on Sustainable Housing



UNEP

Adopted by 56 member States with the objectives to:

- ensure **decent affordable housing** and urban infrastructure to all;
- support cities and human settlements adopting and implementing smart sustainable city concepts;
- **integrated policies** and plans to support: inclusion, including socially mixed communities;
- resource efficiency; and resilience to climate change and disasters.

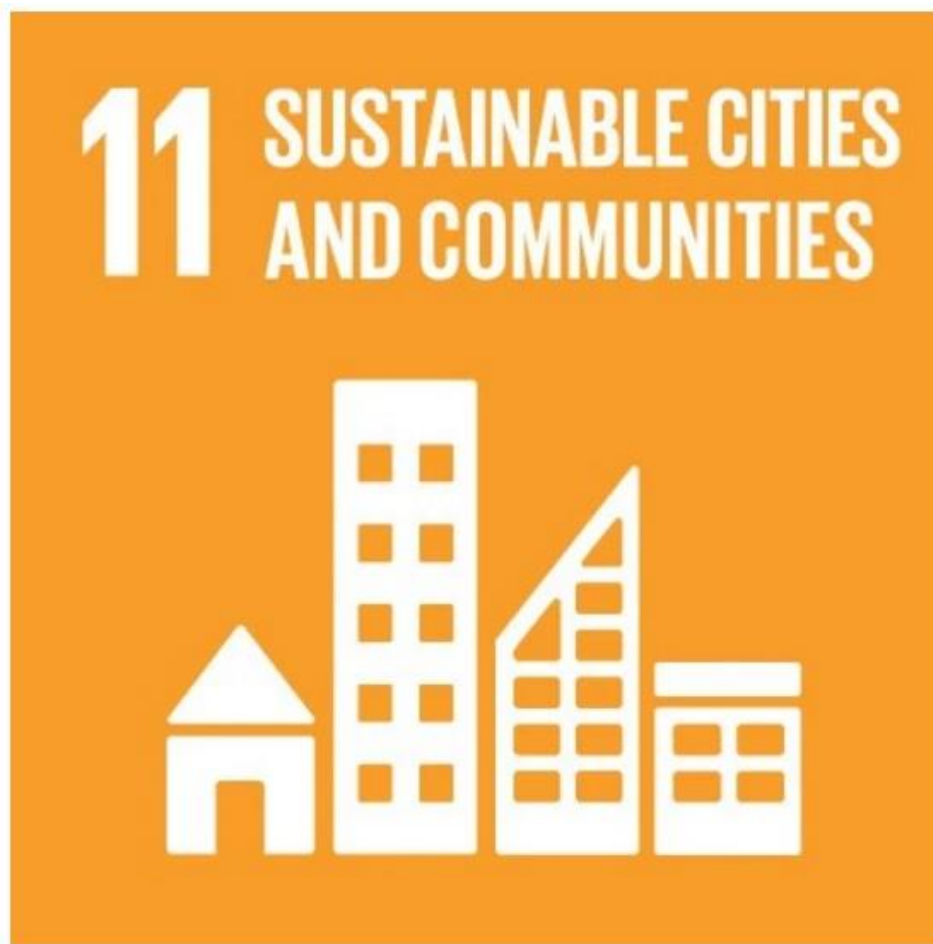


CITIES IN THE CENTRE OF INTEREST



Goal 11: Making cities and human settlements inclusive, safe, resilient and sustainable

<http://www.un.org/sustainabledevelopment/sustainable-development-goals>



SDG 11 Targets and Indicators



UNECE

11.1. By 2030, ensure **access for all to adequate, safe and affordable housing and basic services** and upgrade slums

11.1.1. Proportion of urban population living in slums, informal settlements or inadequate housing

11.2. By 2030, provide access to safe, affordable, accessible and sustainable transport systems for all, improving road safety, notably by expanding public transport, with special attention to the needs of those in vulnerable situations, women, children, persons with disabilities and older persons

11.2.1. Proportion of population that has convenient access to public transport, by sex, age and persons with disabilities

SDG 11 Targets and Indicators



UNECE

11.3. By 2030, enhance inclusive and sustainable urbanization and capacity for participatory, **integrated and sustainable human settlement planning and management in all countries**

11.3.1. Ratio of land consumption rate to population growth rate

11.3.2. Proportion of cities with a direct participation structure of civil society in urban planning and management that operate regularly and democratically

11.4. Strengthen efforts to protect and safeguard the world's cultural and natural heritage

11.4.1. Total expenditure (public and private) per capita spent on the preservation, protection and conservation of all cultural and natural heritage, by type of heritage (cultural, natural, mixed and World Heritage Centre designation), level of government (national, regional and local/municipal), type of expenditure (operating expenditure/investment) and type of private funding (donations in kind, private non-profit sector and sponsorship)

The UN Sustainable Development Goals Report 2018

Goal 11: Make cities and human settlements inclusive, safe, resilient and sustainable

- **Urban sprawl continues with physical expansion of cities increasing at rate 1.5. times** that of the population growth, highlighting the need for better urban planning and more efficient transportation systems.
- **High level of air pollution in cities:** more than 50 per cent of the population globally were exposed to air pollution level at least 2.5 times higher than safe standard. In 2016 4.2 million people died from ambient air pollution.

The UN Sustainable Development Goals Report 2018

Goal 11: Make cities and human settlements inclusive, safe, resilient and sustainable

- Damage to housing due to natural disasters showed a statistically significant rise between 1990-2013.
- Managing solid waste remains a major environmental challenge in cities in several regions. In 214 countries in 103 countries 75 per cent of municipal wastes generated are collected. Even if collected, it is often not treated and disposed in a sustainable environmental manner.

Challenges in the Affordability Gap in Europe

- 100 million people in the UNECE Region, including 81.5 in the EU, 'overburdened' by housing costs (highest in EL, NL, DK, DE).
- Housing costs are a much heavier burden for the people under the poverty threshold (41%) than for people above the threshold (18,6 %).
- Increasingly difficult for those who enter the housing market (this is also a generational issue: 48% of young adults live with their parents).

2030 Agenda, New Urban Agenda, and Geneva Charter on Housing implementation

- National implementation based on **existing policy frameworks**, e.g. **national sustainable development strategies**
- **Review** of policies and strategies in light of SDGs and based on **national priorities and using data**
- Integrated approach that recognises that different challenges and their solutions are interlinked.
- **Inter-ministerial** coordination structures and **‘whole-of-government’** approaches
- **Development of regular reporting**
- **Innovative financing**
- **Building capacities for data collection and reporting**



2030 Agenda, New Urban Agenda, and Geneva Charter on Housing implementation

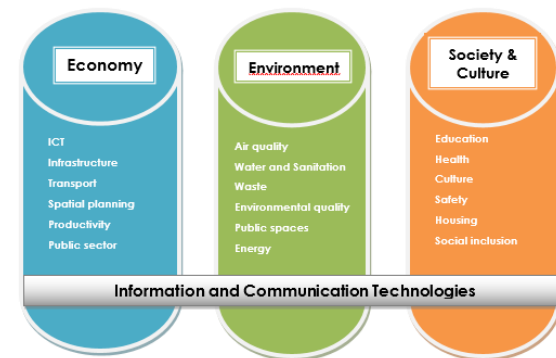
- **Adaptation** of SDGs to national and local realities
- Involvement of **stakeholders** at all levels and from different sectors
- Focus on medium-size and small cities
- Use of smart sustainable city indicators to review the implementation
- Demonstration projects
- Capacity building

UNECE/ITU KEY PERFORMANCE INDICATORS FOR SMART AND SUSTAINABLE CITIES



UNECE

- ✓ Developed by a consortium of organizations (2015-2017)
- ⚙️ International free standard
- 👤 Uniqueness: address smartness & sustainability of a city
- 🌐 Support the localization of SDGs
- 🌍 50 cities around the world



- | Economy | Society & Culture | Environment |
|--------------------|--------------------|-------------------------|
| • ICT | • Education | • Air quality |
| • Infrastructure | • Health | • Water & Sanitation |
| • Transport | • Culture | • Waste |
| • Spatial planning | • Safety | • Environmental quality |
| • Productivity | • Housing | • Public spaces |
| • Public sector | • Social inclusion | • Energy |

Information & Communication Technologies

Urban planning and design: Vienna Partnerships for Affordable Rental Housing



950 Dwellings

Rent/Owner Occupation/ Shopping, offices, kindergarten, green spaces, cultural facilities

INNOVATIVE FINANCIAL MECHANISMS



UNECE

The innovative financial mechanisms approach consists of three main components:

- **integrated approach to urban development**
- **people-first public-private partnerships (PPPP)** and
- **good governance.**





UNECE

68th Commission Session

DAY OF CITIES

8 APRIL 2019 | PALAIS DES NATIONS | GENEVA



<http://www.unece.org/housing/dayofcities.html>

THANK YOU

HOUSING AND LAND MANAGEMENT

