

Issues and challenges in waste management in low-income and transition economies

Dr. Roland Ramusch, Sector specialist – Solid Waste



European Bank
for Reconstruction and Development



European Bank
for Reconstruction and Development



Source: <https://freerangestock.com>

Ferrari F70 “LaFerrari”

963 HP, Matter of expense: 1,400,000 EUR



European Bank
for Reconstruction and Development





European Bank
for Reconstruction and Development



Rank 16 of the most
reliable cars ever built

Skoda Octavia Combi

122 HP, Matter of expense: 19,000 EUR

What matters:

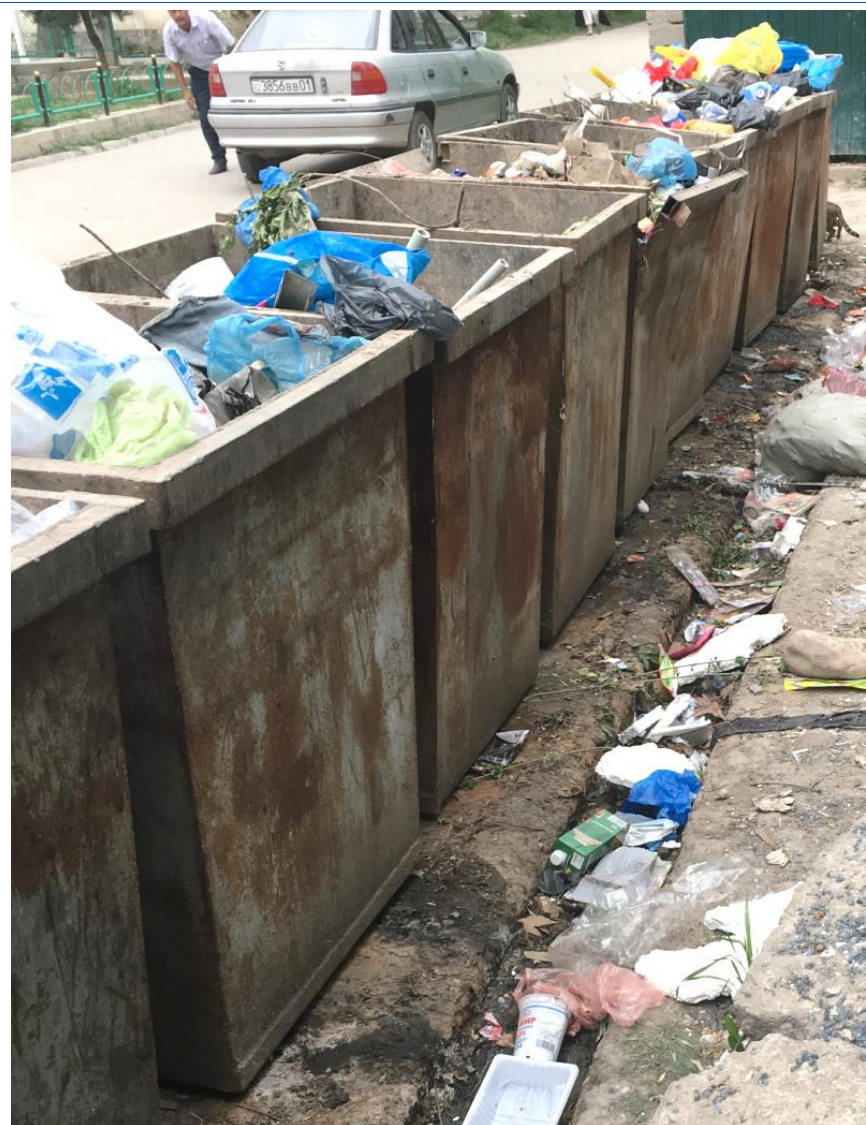
- We need sustainable solutions that are reliable,
- that work and users understand, and
- that are cost-effective and affordable.

Problem: usually waste mgmt. sector receives the least political attention and financial support compared with other sectors.

Waste collection point - Dushanbe (Tajikistan)



European Bank
for Reconstruction and Development



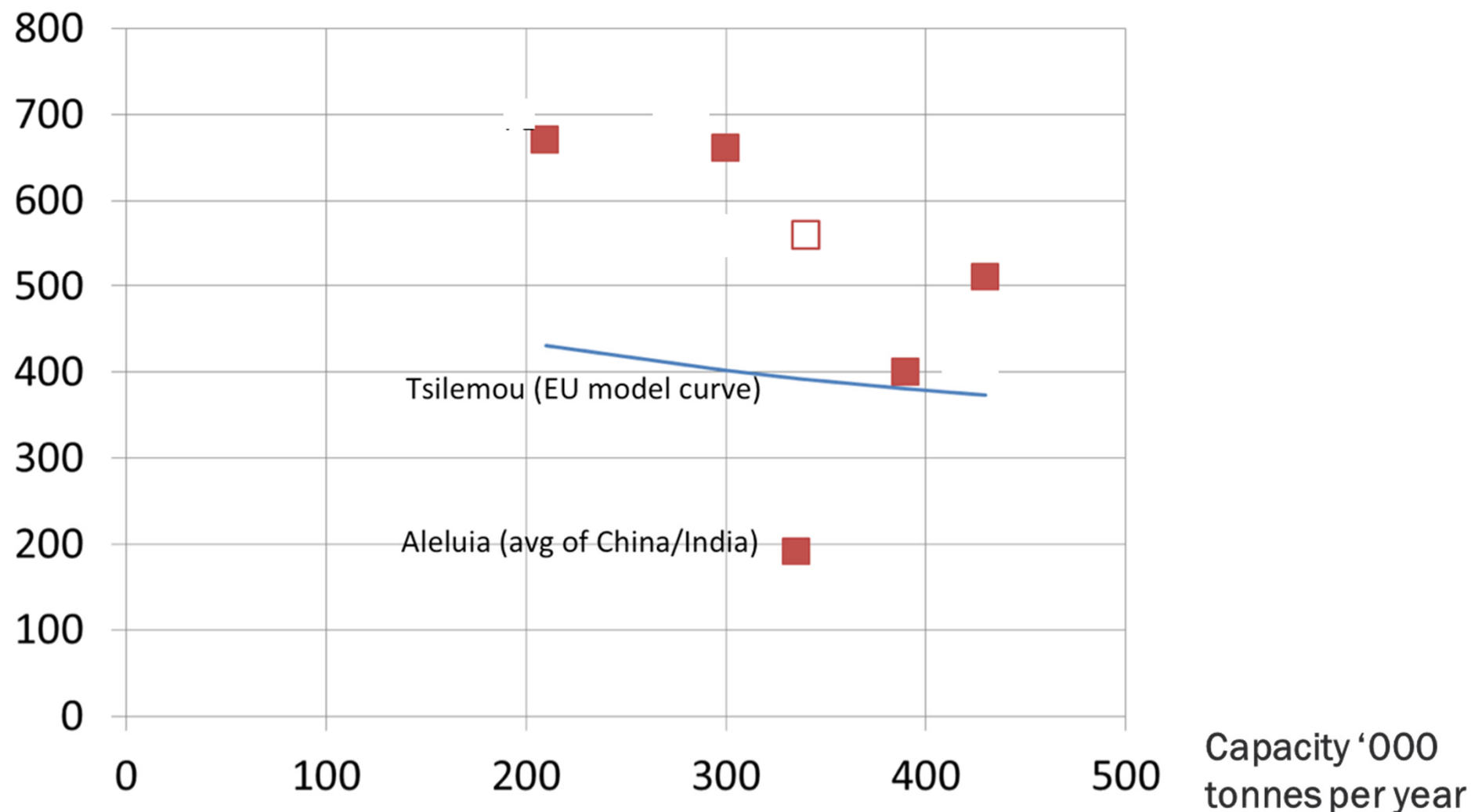
2/14/2019

Roland Ramusch



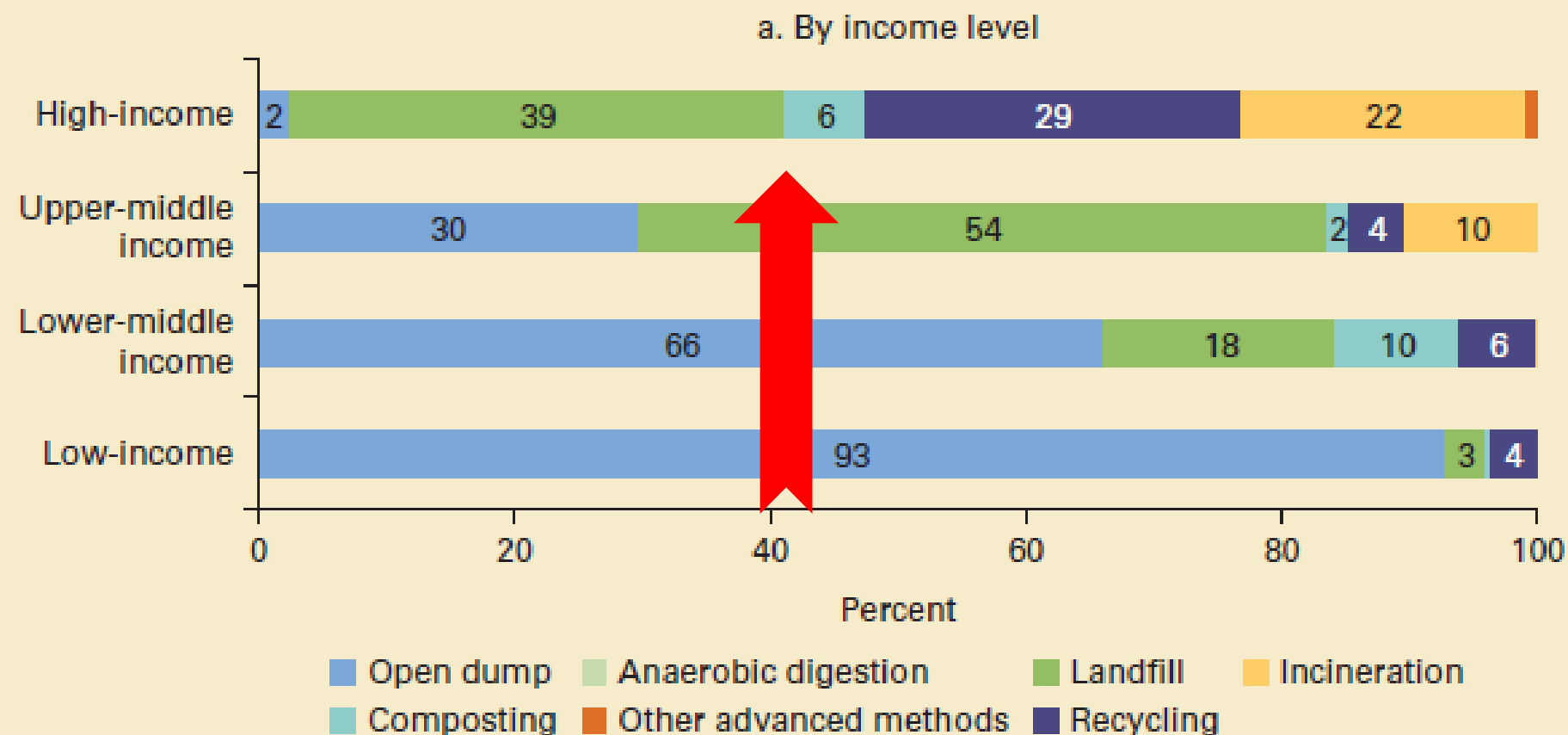
**ҚУТТИИ
ЛАМПАҲОИ
КАММАСРАФИ
СИМОБДОРИ
АЗ ИСТИФОДА
БАРОМАДАШУДА**

Capital expenditures for municipal solid waste incinerators (EUR per tonne capacity)



Waste management – hidden services

Figure 2.13 Disposal Methods by Income



Source: Worldbank (2018): What a Waste 2.0: A Global Snapshot of Solid Waste Management to 2050

Waste management – hidden services



European Bank
for Reconstruction and Development



Waste management – hidden services



European Bank
for Reconstruction and Development



Know your waste!

Problems

- Lacking quality and availability of waste-related data
- Different waste definitions
- “Norms”

=> Most important pre-requisite for waste management planning.



Source: www.concordia.edu/facilities

Reluctance to change



European Bank
for Reconstruction and Development



Reluctance to change

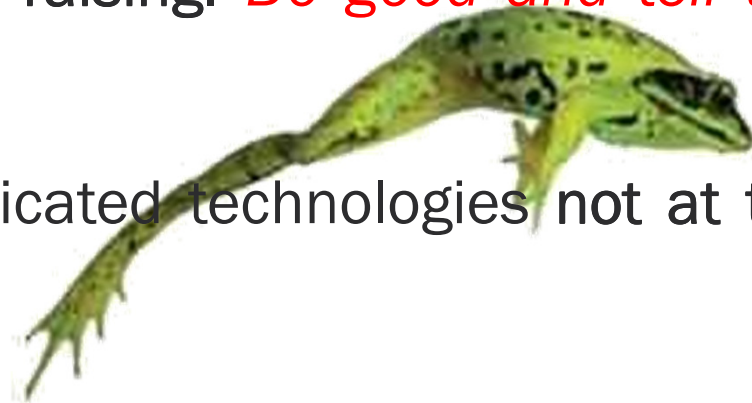


<https://kz.all.biz/en/the-garbage-truck-with-side-loading-of-ko-449-01-g386917>



One step at a time!

- Start with increased and improved collection service and infrastructure
- Closure of dumps => sanitary landfills
- Pilot source separation projects: dry recyclables first – bio waste later
- In parallel: public awareness raising. *Do good and tell the people about it!*
- Capital intensive and sophisticated technologies not at the beginning



Plan your waste!

- National / regional waste management plans and strategies are the backbone of all planning activities;
- Unified definitions, legal acts;
- Set up waste recording and monitoring systems;
- Enforcement of waste related legislation.

What is in it for you?

- Stepwise and modular approaches makes system affordable for you **and** your customer.
- Right choice of technology that works, reduces operating costs and maintenance costs.
- Informed and aware public is willing to pay more for visible and hidden, but improved services.
- Systems that are understood and accepted by the public.

How we can support you



European Bank
for Reconstruction and Development



Contact

Roland Ramusch

Sector specialist – Solid waste
Sustainable Infrastructure Policy and Project
Preparation

Tel: + 44 020 7338 7862

Email: ramuschr@ebrd.com

EBRD, One Exchange Square
London, EC2A 2JN
United Kingdom
www.ebrd.com

Find us on social media



